

Heavy-Duty

140 lb. Load Class

1/2" Side Clearance

Max. Drawer Width: 36"



8605 Heavy-Duty Over Travel Drawer Slide

The 8605 Over Travel Drawer Slide is designed to accommodate wider and heavier drawers for today's challenging applications in the commercial, residential and education markets. This slide has a shorter profile vs. traditional lateral file slides and features a lever disconnect.

Applications

- Residential and Commercial Furniture
- Commercial Storage
- Retail Store Displays

Specifications

Model: 8605 Over Travel Drawer Slide

Mounting: Side

Disconnect: Butterfly Lever

Hole Pattern: 32mm and Traditional

Face Frame Mounting: Yes. Slide must be blocked out. See face frame diagram (Do not use a rear mounting bracket.)

Type: Ball-Bearing

Travel: Over Travel

Finish: Zinc

Length: 12", 14", 16", 18", 20", 22", 24", 26", 28"

Clearance: .51" + .01" - 0" on each side

Height: 1.98" [50.4mm]

Packaging: Bulk Pack (8605B): all sizes - 5 pair per carton

Action: Telescopic

Slide Configuration: Unhanded

Load Rating (based on application)

Load: 140 lb.

Max. Drawer Width: 36"

Slides: 18"

Drawer Width: 36"

Cycles: 50,000 (center pull)

Load: 190 lb.

Max. Drawer Width: 18"

Slides: 18"

Drawer Width: 18"

Cycles: 25,000 (center pull)

As with all Knap & Vogt drawer slides, the 8605 is designed to meet or exceed ANSI performance standards as established by BIFMA, BHMA and KCMA.

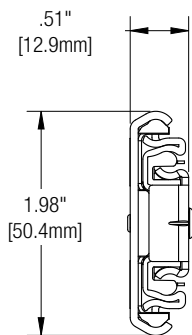
Hardware

#7 x 1/2" Phillips Truss Head

Warranty

Limited Lifetime Warranty

Profile

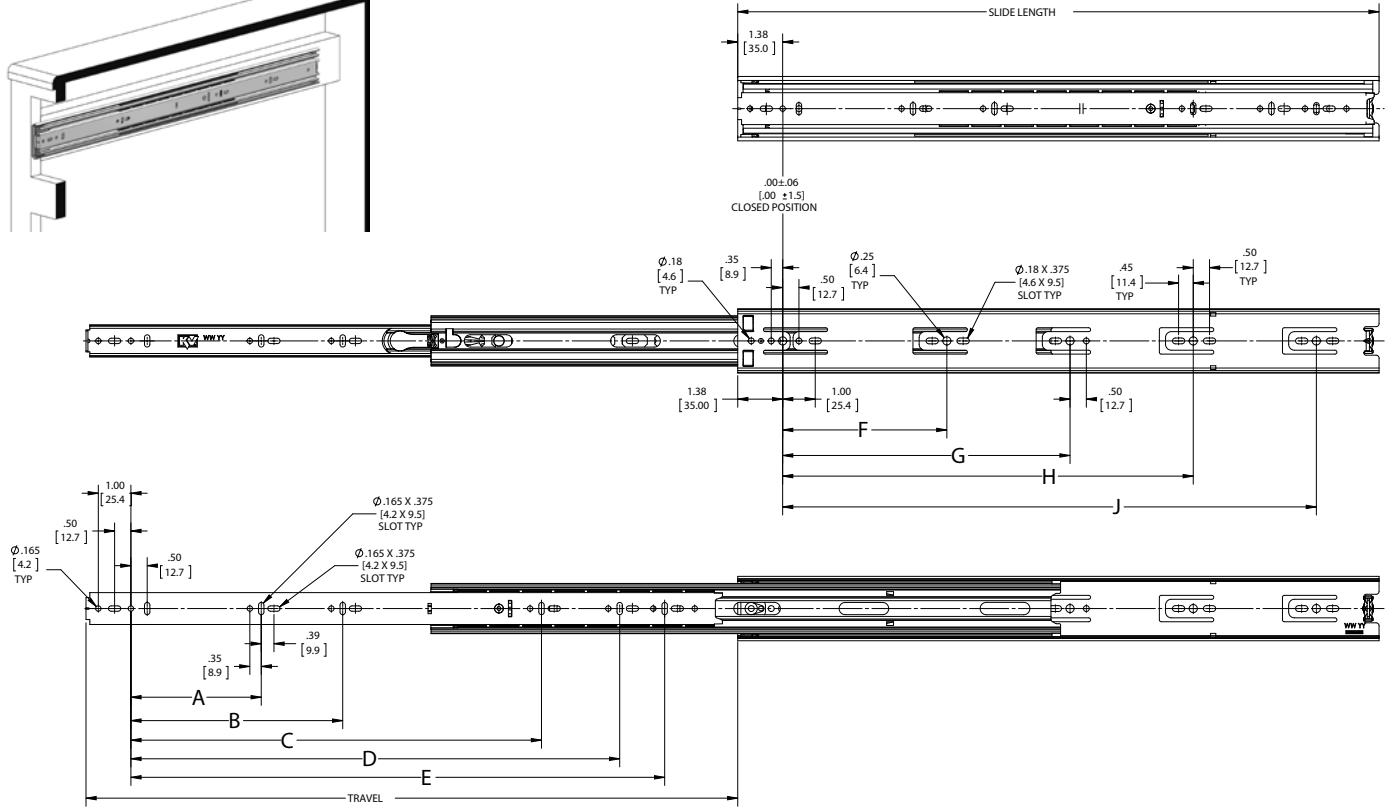
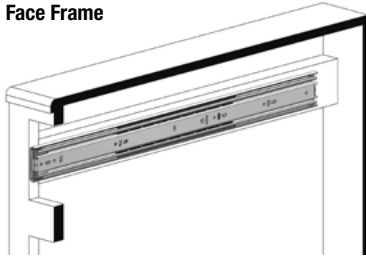


Clearance

.51" + .01" - 0"
12.9mm + .3mm - 0mm

Charted Information

Face Frame



SKU Number	Slide Size inch/mm	Length inch/mm	Travel inch/mm	A inch/mm	B inch/mm	C inch/mm	D inch/mm	E inch/mm	F inch/mm	G Inch/mm	H Inch/mm	J Inch/mm
8605B 12	12" [300mm]	11.81" [300mm]	13" [330mm]	-	-	-	-	8.82" [224mm]	5.04" [128mm]	8.82" [224mm]	-	-
8605B 14	14" [350mm]	13.78" [350mm]	15" [381mm]	5.04" [128mm]	-	-	-	10.08" [256mm]	5.04" [128mm]	8.82" [224mm]	-	-
8605B 16	16" [400mm]	15.75" [400mm]	17" [432mm]	5.04" [128mm]	-	-	-	11.34" [288mm]	5.04" [128mm]	8.82" [224mm]	12.60" [320mm]	-
8605B 18	18" [450mm]	17.72" [450mm]	19" [483mm]	5.04" [128mm]	-	-	-	12.60" [320mm]	5.04" [128mm]	8.82" [224mm]	13.86" [352mm]	-
8605B 20	20" [500mm]	19.69" [500mm]	21" [533mm]	5.04" [128mm]	12.60" [320mm]	-	-	16.38" [416mm]	5.04" [128mm]	8.82" [224mm]	16.38" [416mm]	-
8605B 22	22" [550mm]	21.65" [550mm]	23" [584mm]	5.04" [128mm]	12.60" [320mm]	-	-	16.38" [416mm]	5.04" [128mm]	8.82" [224mm]	13.86" [352mm]	17.64" [448mm]
8605B 24	24" [600mm]	23.62" [600mm]	25" [635mm]	5.04" [128mm]	8.82" [224mm]	16.38" [416mm]	-	20.16" [512mm]	5.04" [128mm]	8.82" [224mm]	13.86" [352mm]	18.90" [480mm]
8605B 26	26" [650mm]	25.59" [650mm]	27" [686mm]	5.04" [128mm]	8.82" [224mm]	16.38" [416mm]	-	20.16" [512mm]	5.04" [128mm]	8.82" [224mm]	13.86" [352mm]	21.42" [544mm]
8605B 28	28" [700mm]	27.56" [700mm]	29" [737mm]	5.04" [128mm]	8.82" [224mm]	16.38" [416mm]	20.16" [512mm]	23.94" [608mm]	5.04" [128mm]	8.82" [224mm]	13.86" [352mm]	21.42" [544mm]



KNAPE & VOGT

2700 Oak Industrial Dr. NE
Grand Rapids, MI 49505-6026 USA
1.800.253.1561 | 616.459.3311
Fax: 877.636.3290
www.kv.com

This and other KV literature is available for download at www.kv.com > Resource Library

Knappe & Vogt reserves the right to change product specifications at any time without notice and without incurring responsibility for existing units.

©2019 Knappe & Vogt. KV and the KV logo are trademarks of Knappe & Vogt.

OL2891/0819