

## Closet Accessories

Fits 1-1/16" and 1-5/16" round closet rods  
Fits 15 mm x 30 mm oval closet rods



# Closet Rod Flanges and End Caps

### For 1-1/16" Outside Diameter Round Closet Rods

(including KV 660, 750 1 & 770 1 series closet rods)



#### 632 Line Bore Flange

Two-5mm pins for pre-drilled applications. One screw hole for extra mounting strength.

Standard Pack (10/carton)	
Chrome (CHR)	632 CHR



#### 730 End Cap

Use with KV 660 or 750 1 closet rods.

Standard Pack (50/box)	
Anochrome (ANO)	730 ANO



#### 731 End Cap

Use with KV 770 1 closet rods.

Standard Pack (50/box)	
Anochrome (ANO)	731 ANO



Brass



Chrome

#### 734 Wall-Mount Flanges

Two screw holes on vertical 2" centers.

Standard Pack (50/box w/ screws)	
Brass (BR)	734 BR
Chrome (CHR)	734 CHR



(Brass-look)



(Chrome-look)

#### 735 Wall-Mount Flanges

Two screw holes on horizontal 2" centers.

Standard Pack (50/box w/ screws)	
Brass (BR)	735 BR
Chrome (CHR)	735 CHR



#### 742 3-Tier Wall-Mount Flange

Three screw holes. For custom applications.

Standard Pack (12/box w/screws)	
Chrome (CHR)	742 CHR



#### 757 Pilaster Flange

Mounts to KV 233 or 255 pilaster standards.

Standard Pack (100/box)	
Anochrome (ANO)	757 ANO



#### 760 Center Support

Provides 24" of center support. Can be cut to size.

Standard Pack (12/box w/screws)	
Anochrome (ANO)	760 ANO

### For 1-5/16" Outside Diameter Round Closet Rods

(including KV 750 5 & 770 5 series closet rods)



#### 732 End Cap

Use with KV 770 5 closet rods.

Standard Pack (10/carton)	
Anochrome (ANO)	732 ANO



#### 764 Wall-Mount Flange

Three screw holes spaced 1-1/8" from center.

Standard Pack (50/box)	
Chrome (CHR)	764 CHR



#### 766 Wall-Mount Flange

Three screw holes: two on 2-1/4" centers, one at bottom center.

Standard Pack (50/box)	
Chrome (CHR)	766 CHR



#### 881 Oval Line Bore Flange

Two screw holes on vertical 2" centers.

Standard Pack (50/box w/ screws)	
Chrome (CHR)	881 CHR

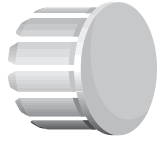
### For Oval Closet Rods

(including KV 880 series closet rods)

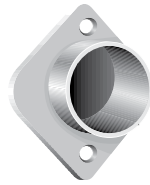
# Closet Rod Flanges and End Caps



632 Closet Rod Flange



730/731/732  
Closet Rod End Cap



734 Closet Rod Flange



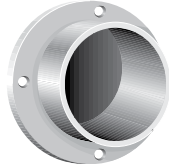
735 Closet Rod Flange



742 Three-Tier Closet  
Rod Flange



757 Closet Rod Flange



764 Closet Rod Flange



766 Closet Rod Flange



881 Closet Rod Flange



760 Closet Rod  
Center Support

## 1. Product Name

**632 Closet Rod Flange.** Open flange with 2 - 5mm pins for 1-1/16" OD closet rods.  
**734 Series Closet Rod Flanges.** Closed flange with for 1-1/16" OD closet rods. **742 Three-Tier Closet Rod Flange.** Open three-tier flange 1-1/16" OD closet rods. **735 Series Closet Rod Flanges.** Open flange for 1-1/16" OD closet rods. **757 Closet Rod Flange.** Open flange for 1-1/16" OD closet rods mounted to KV 233 or 255 pilaster standards.  
**730/731/732 Closet Rod End Cap.** For 1-1/16" and 1-5/16" OD closet rods. **760 Closet Rod Center Support.** Provides center support for 1-1/16" OD closet rods. **764 Closet Rod Flange.** Closed flange for 1-5/16" OD closet rods. **766 Closet Rod Flange.** Open flange for 1-5/16" OD closet rods. **881 Closet Rod Flange.** Open flange for oval closet rods.

## 2. Manufacturer

Knappe & Vogt Manufacturing Company  
2700 Oak Industrial Dr. NE, Grand Rapids, MI USA 49505-6026  
(616) 459-3311 | [www.kv.com](http://www.kv.com)

## 3. Product Description

**Basic Use:** Closet Rod Flanges and End Caps safely and securely attach round and/or oval closet rods to walls and/or cabinetry.

### Composition and Materials:

632 Closet Rod Flange: Zinc cast  
734 Series Closet Rod Flanges: Zinc cast  
742 Three-Tier Closet Rod Flange: Zinc cast  
735 Series Closet Rod Flanges: Zinc cast  
757 Closet Rod Flange: Steel  
730/731/732 Closet Rod End Cap: Steel  
760 Closet Rod Center Support: Steel  
764 Closet Rod Flange: Zinc cast  
766 Closet Rod Flange: Zinc cast  
881 Closet Rod Flange: Zinc cast

### Sizes:

632 Closet Rod Flange, 734 Series Closet Rod Flanges, 742 Three-Tier Closet Rod Flange, 735 Series Closet Rod Flanges, 757 Closet Rod Flange, and 760 Closet Rod Center Support: Fits all 1-1/16" outside diameter closet rods.  
764 Closet Rod Flange and 766 Closet Rod Flange: Fits all 1-5/16" outside diameter closet rods.  
881 Closet Rod Flange: Fits oval closet rods.  
730/731/732 Closet Rod End Cap: Fits all 1-1/16" and 1-5/16" outside diameter closet rods.

**Finishes:** Anochrome (ANO), Brass (BR), Chrome (CHR). Some finishes may not be available in every closet rod flange, end cap or support.

## 4. Technical Data

**Applicable Standards:** Closet Rod Flanges and End Caps are tested to meet or exceed ANSI performance standards as established by BHMA in the Knappe & Vogt™ (KV™) recommended application.

Results were obtained by laboratory testing in accordance with ANSI/ BHMA A156.9-2003 performance standard. Actual use conditions will typically result in lower load capacity than laboratory conditions.

Representative testing in a fully configured application is the only way to assure proper performance, durability, and safety.

### Environmental Considerations:

**Environment:** Excessive humidity, salts, or other chemical agents can corrode the finish and attack metal or plastic components.

**Fastening:** Inadequate or incorrect fasteners can result in the closet rod support pulling loose and causing damage.

**Alignment:** Improper alignment can result in a closet rod support that is ineffective and unsafe.

## 5. Installation

Place product in desired position. Mark position of product and location of any necessary screw and/or drill holes. If necessary, drill appropriate screw and/or drill holes. Fasten product to wall, ceiling and/or cabinetry with recommended screws or hardware according to specific flange, end cap or closet rod support instructions.

## 6. Availability and Cost

**Availability:** Knappe & Vogt™ (KV™) products are available from stocking distributors and through KV™ Representatives worldwide.

**Cost:** Current pricing is available from area KV™ Representatives. Please call for the nearest representative at: (800) 253-1561.

## 7. Warranty

**Limited Lifetime Warranty:** Knappe & Vogt offers its standard Limited Lifetime Warranty to the initial purchaser of commercial products. This warranty covers defects in materials and workmanship which occur during normal use, and the remedy is limited to repair or replacement of defective products, at KV's option. Certain types of defects and damage are excluded from warranty coverage, costs and expenses are not covered, and additional restrictions apply. A copy of the Limited Lifetime Warranty, with all warranty details, limitations and disclaimers, is available on the Customer Care Connection location at [www.kv.com](http://www.kv.com) or from KV Customer Service, 2700 Oak Industrial Drive, Grand Rapids, MI 49505, (800) 253-1561.

## 8. Maintenance

KV™ Closet Rod Flanges and End Caps require no maintenance. Inspect for proper fit periodically and adjust when necessary. Replace as required or recommended by application.

## 9. Technical Services

Knappe & Vogt™ and area representatives can assist with any application. For further information, or for the name of the representative nearest you, please call Knappe & Vogt™ Customer Service: (800) 253-1561 or visit our website at: [www.kv.com](http://www.kv.com).

## 10. Filing Systems

Additional product information, data sheets, application sheets, and a full catalog are available upon request from Knappe & Vogt™.



**KNAPPE & VOGT**

2700 Oak Industrial Dr. NE  
Grand Rapids, MI 49505-6026 USA  
1.800.253.1561 | 616.459.3311  
Fax: 877.636.3290  
[www.kv.com](http://www.kv.com)

**BHMA** Knappe & Vogt shelving products follow the ANSI testing standards established by BHMA.

*Knappe & Vogt reserves the right to change product specifications at any time without notice and without incurring responsibility for existing units. This information conforms to editorial style prescribed by The Construction Specifications Institute.*