

# Roll-Ezy Aluminum Track Systems

## Complete Assembly



### P1092 Small to Medium Glass Door Track Assembly Kit

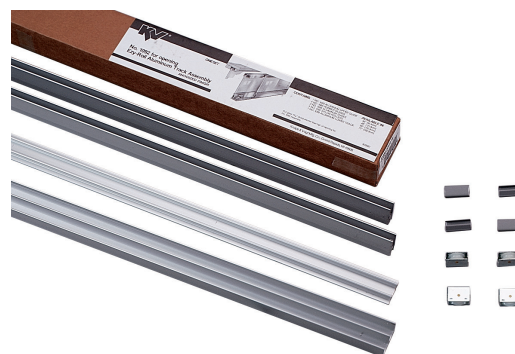
**Includes:** (1) 1093 Upper Channel, (4) 1097 Rollers,  
(4) 1085 Vinyl Guides, (2) 1095 Shoe, (1) 1099 Lower Track

**Packed:** 1 set per carton

**Features:** For small to medium size glass door installations;  
for 1/4" thick glass

Complete Assemblies	
Product	Length
P1092 ANOD 36	36"
P1092 ANOD 48	48"
P1092 ANOD 60	60"
P1092 ANOD 72	72"

**Installation Notes & Recommendations:**  
Knape & Vogt does not recommend butt-joints  
and/or openings longer than 12 feet.  
We recommend that the height to width ratio for  
glass doors should not exceed 2:1.



### 1093 144 Upper Channel

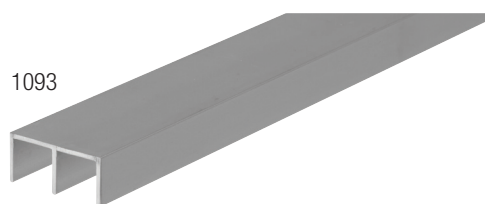
**Size:** 1-3/16" width x 9/16" height x 144" length

**Finish:** Aluminum (AL)

**Origin:** Made in the USA

**Packed:** 1 each

**Features:** Double channel for tops, bottoms, and ends; for small to  
medium size glass door installations; for 1/4" thick glass



1093

### 1095 144 Door Shoe

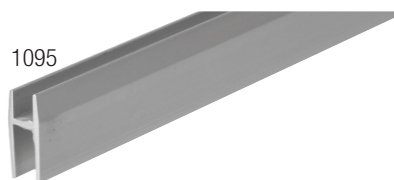
**Size:** 27/64" width x 1" height x 144" length

**Finish:** Aluminum (AL)

**Origin:** Made in the USA

**Packed:** 1 each

**Features:** Rollers to be inserted in the bottom; for small to medium  
size glass door installations; for 1/4" thick glass



1095

### 1096 144 Single Lower Track

**Size:** 31/64" width x 15/32" height x 144" length

**Finish:** Aluminum (AL)

**Origin:** Made in the USA

**Packed:** 1 each

**Features:** For single doors, or may be used with 1093 double channel  
for covered installation; for small to medium size glass door  
installations; for 1/4" thick glass



1096

NOTE: Cut glass 1-1/2" lower than opening when using 1096/1093 tracks

### 1099 144 Double Lower Track

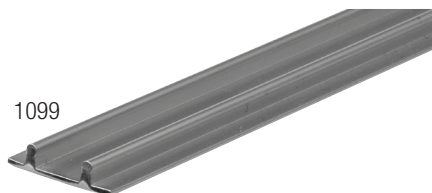
**Size:** 1-1/16" width x 1/4" height x 144" length

**Finish:** Aluminum (AL)

**Origin:** Made in the USA

**Packed:** 1 each

**Features:** For small to medium size glass door installations;  
for 1/4" thick glass



1099

NOTE: Cut glass 1-3/16" lower than opening when using 1099 track

### 1085 VINYL Guide

**Size:** 7/8" length

**Finish:** Vinyl (VINYL)

**Origin:** Made in the USA

**Packed:** 100 per carton

**Features:** Vinyl guide fits over the top of glass for noiseless operation  
in upper channel; for small to medium size glass door  
installations; for 1/4" thick glass



### 1087 RUB Rubber Bumper

**Finish:** Rubber (RUB)

**Packed:** 100 per carton

**Features:** Rubber bumper installs in jambs to cushion glass



### 1097 NYLON Nylon Rollers

**Finish:** Nylon (NYLON)

**Origin:** Made in the USA

**Packed:** 100 per carton

**Features:** Rubber roller press fits into bottom of 1095 shoe



### 1098 ZC Steel Ball-bearing Roller

**Finish:** Zinc (ZC)

**Origin:** Made in the USA

**Packed:** 20 per carton

**Features:** Steel ball-bearing roller press fits into bottom  
of 1095 shoe

