

INSTRUCTIONS: INSCAPE ROCKIT BENCH CYLINDER REPLACEMENT

Repair kit includes:

- | | |
|--|-----------------------------|
| (2) Hydraulic lift cylinders | (1) 4mm hex wrench |
| (2) Small zip ties | (1) #2 Phillips screwdriver |
| (2) Replacement cylinder shroud sets
(use appropriate black or white set) | (1) Zip tie cutter |
| | (1) Certified sticker |

Back-up fasteners: (If missing, etc.)

- (2) Shroud screws
- (2) Cylinder bolts
- (2) Small zip ties

Not included:

- Power driver equipped with a #2 Robertson square drive bit or #2 phillips bit



CAUTION: REMOVE AND REPLACE ONE CYLINDER AT A TIME

Scan to watch the installation video

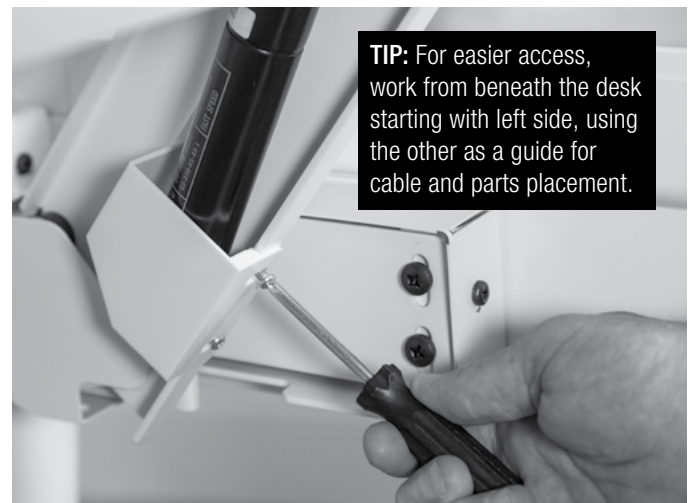


BEFORE YOU START

Inspect the Rockit Workbench for general condition and operation, noting any damage. You MUST remove all items from the top of the desk before starting the repair, setting aside for later reinstall.



- 1** Squeeze height adjustment lever, raising desk to its full height, then lower approximately 2".



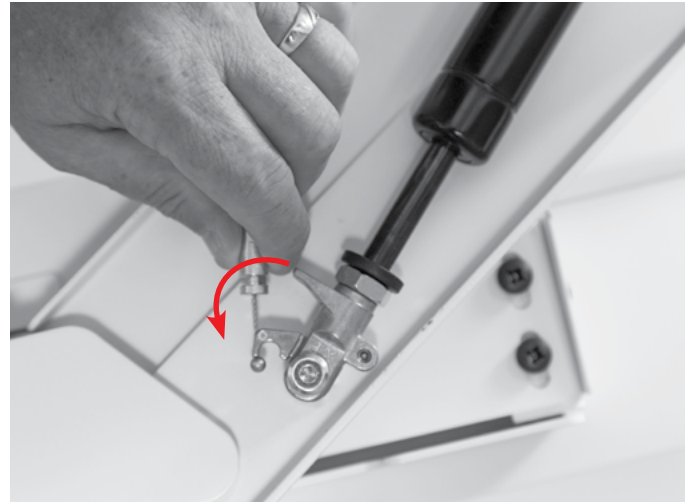
- 2** Remove the four phillips head screws, two from EACH of the rear cylinder shrouds and set screws aside. The old cylinder shrouds should be discarded.



- 3** Remove the screws holding the adjustment lever assembly and cable management clips using either a #2 square drive bit or a #2 phillips bit, setting screws and clips aside.



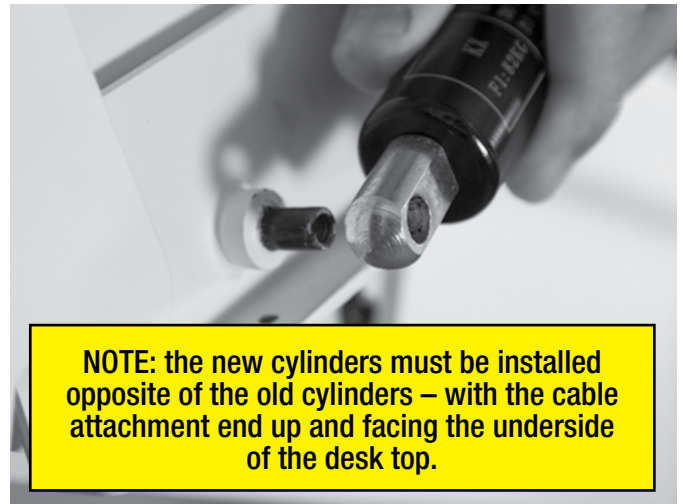
4 Cut the zip ties holding the cable to the top and bottom of the old cylinder.



Then disengage the cable from the end of the cylinder.



5 With the 4mm hex wrench, remove the two bolts securing the cylinder from the posts and set aside for reuse, and then discard the old cylinder.

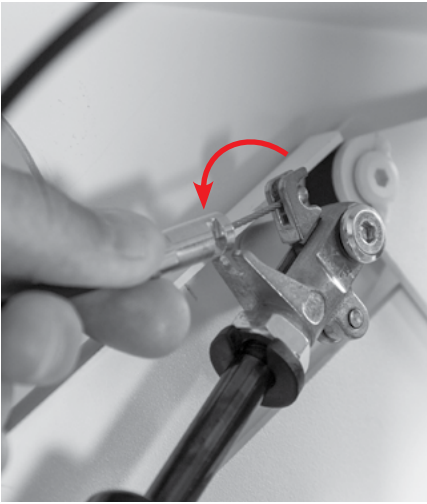


6 Replace with one of the new cylinders. Start by attaching the cable end eyelet to the upper frame post and then by squeezing the height adjustment lever, adjust the desk height to match the new cylinder length, placing the lower cylinder eyelet over the bottom post.



7 Reinstall the cylinder attachment bolts, both top and bottom, to *finger tightness only*.





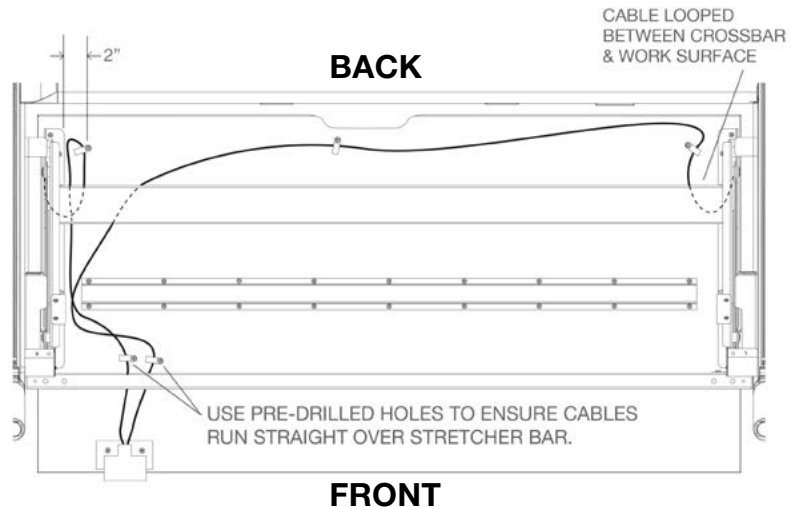
8 Now reattach the adjustment cable to the upper end of the replacement cylinder and secure with a new zip tie. The upper zip tie should be snugged up just above the lock nut as shown.

With the cable attachment end of the cylinder at the top, a lower zip tie is not needed.



**REPEAT STEPS 4–9
FOR REPLACING THE CYLINDER
ON THE OPPOSITE SIDE.**

9 Using the 4mm hex wrench, tighten the upper and lower cylinder bolts to *finger pressure only*.



10 With both cylinders replaced, reinstall the adjustment lever assembly in the previous location under the desk. Then secure the cables neatly on the underside of the desk, routing to remove any excess slack and secure with cable clips.



11 Reinstall both new rear cylinder shrouds.



12 Place the certification sticker on the underside of the desk in the location shown next to the existing serial number sticker.

Finish

- Check for proper operation. Using the adjustment lever, raise and lower the desk to confirm smooth movement.
- Reinstall all customer items removed from the desk at the beginning of the repair.
- Educate the end-user in the proper operation of the Inscape Rockit Bench by reviewing the proper operational procedures. Not to exceed the recommended weight load of 25 lbs and to never use as a ladder or step stool.



Scan to watch the
installation video

FOR INSTALLATION QUESTIONS CALL OR VISIT WWW.KNAPEANDVOGT.COM/ROCKITBENCHREPAIR:
800-253-1561, option 2. 8 AM – 5 PM EST or 800-959-9675, option 2. 6 AM - 5 PM PST